

# Construction Update

## Value Engineering Material Selections

Groves Middle School  
Port Neches Middle School

August 12, 2008



# Groves Middle School Recap

## Exterior Materials

- Brick:**

Switch to “king size” brick + changed manufacturer for cost savings.  
Color changes due to change in manufacturer (availability).

- CMU Block:**

Used only at the front elevation building.  
Block on backside replaced by brick at the request of the mason.  
No change in color, re-assignment of locations.

- Glass:**

Color changed slightly for cost savings.

## Interior Materials

- Brick:**

Reduced the amount of brick in main street for cost savings.

- Porcelain Tile:**

Change manufacturer for cost savings – color slightly changed.





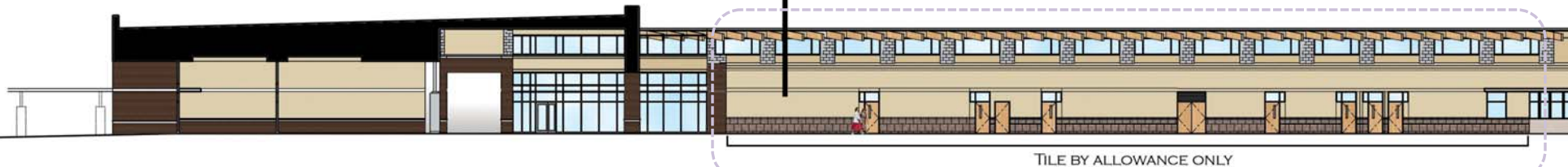




DETAILED BLOW UP OF THIS AREA SHOWN BELOW



BRICK IN BASE  
CHANGE TO TILE  
IN ALLOWANCE



FINE ARTS

DINING  
ENTRY

HALLWAY IN FRONT OF ADMIN



DETAILED BLOW UP OF THIS AREA SHOWN BELOW



FRONT  
ENTRY

LIBRARY

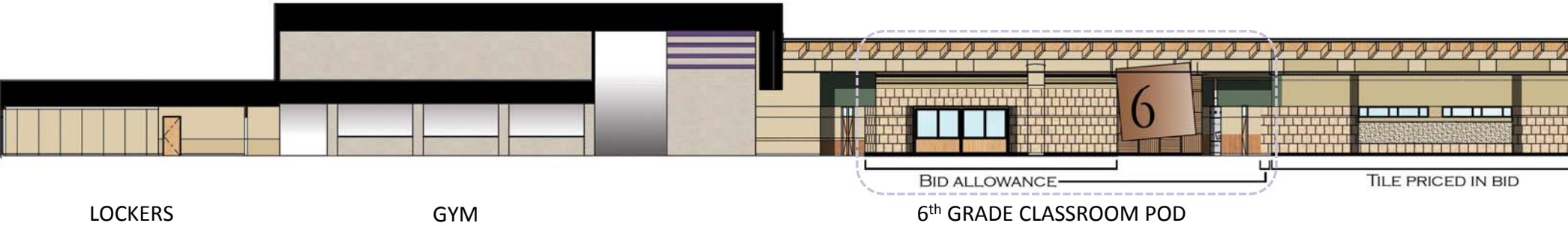
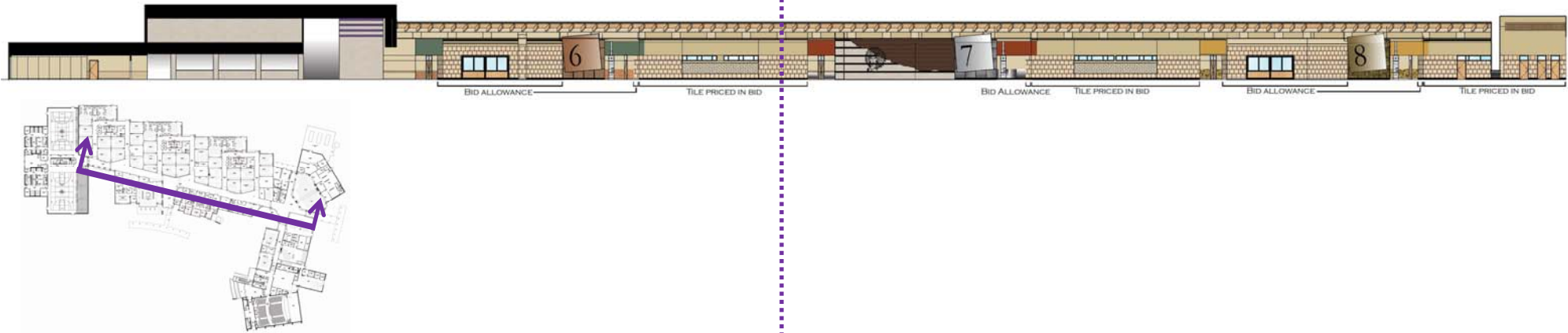
LIBRARY/GYM  
ENTRY

GYM

LOCKERS



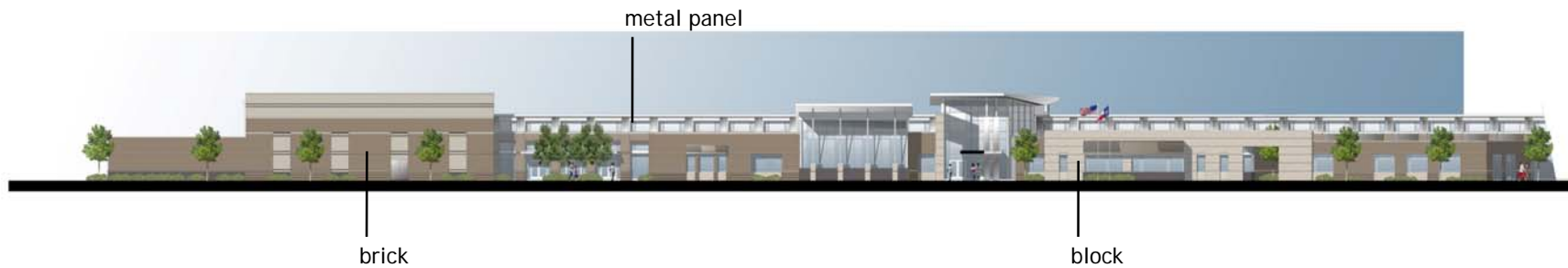
DETAILED BLOW UP OF THIS AREA SHOWN BELOW





DETAILED BLOW UP OF THIS AREA SHOWN BELOW









# Port Neches Middle School Recap

## Exterior Materials

- Brick:**

Switch to “king size” brick + changed manufacturer for cost savings.  
Color changes due to change in manufacturer (availability).  
Reduced to one color of exterior brick instead of two colors.

- CMU Block:**

No change in color – switch from burnished to splitface.

## Interior Materials

- Brick / Block:**

Reduced the amount of brick in main street for cost savings.

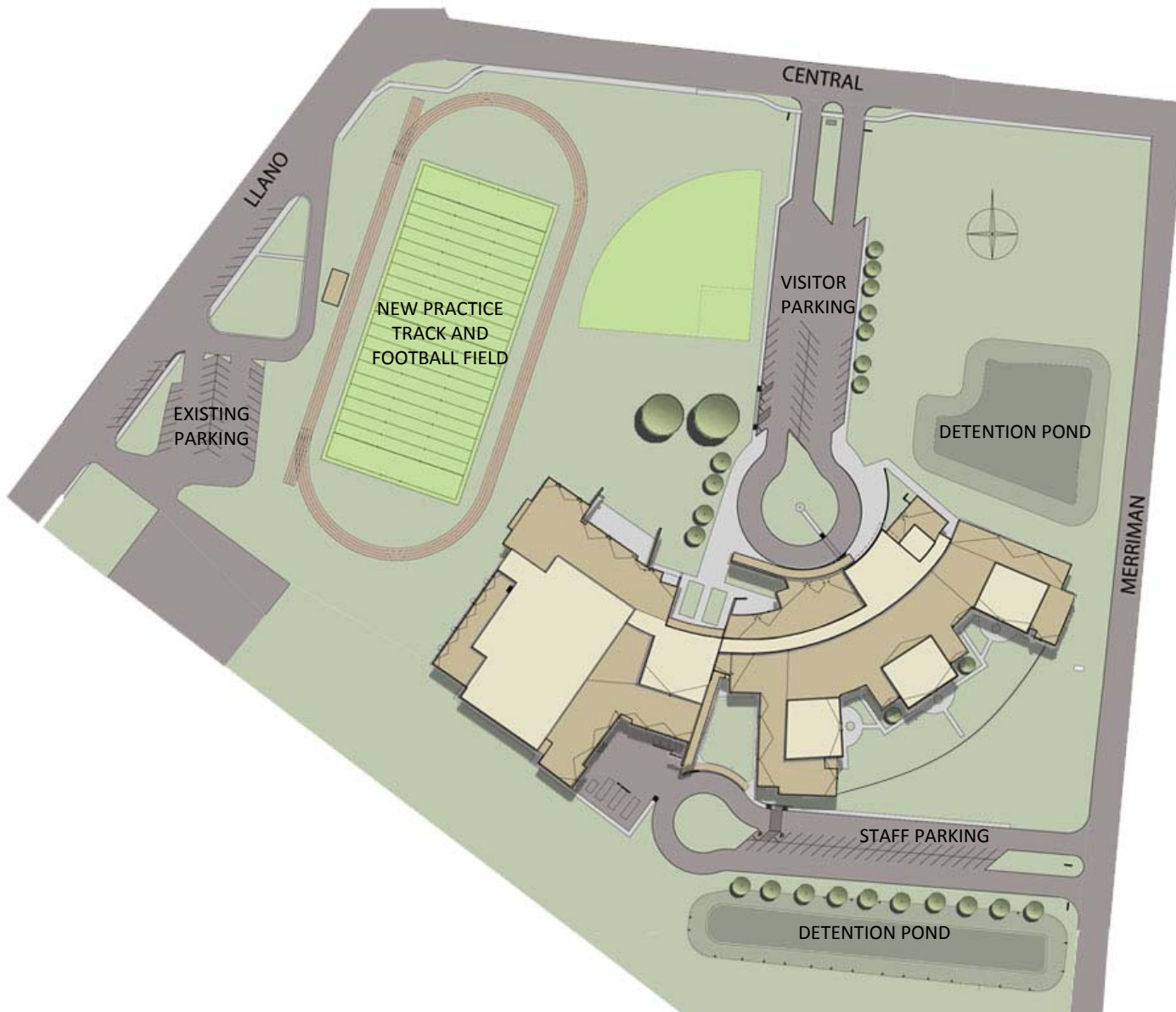
- Porcelain Tile:**

Change manufacturer for cost savings – color slightly changed.

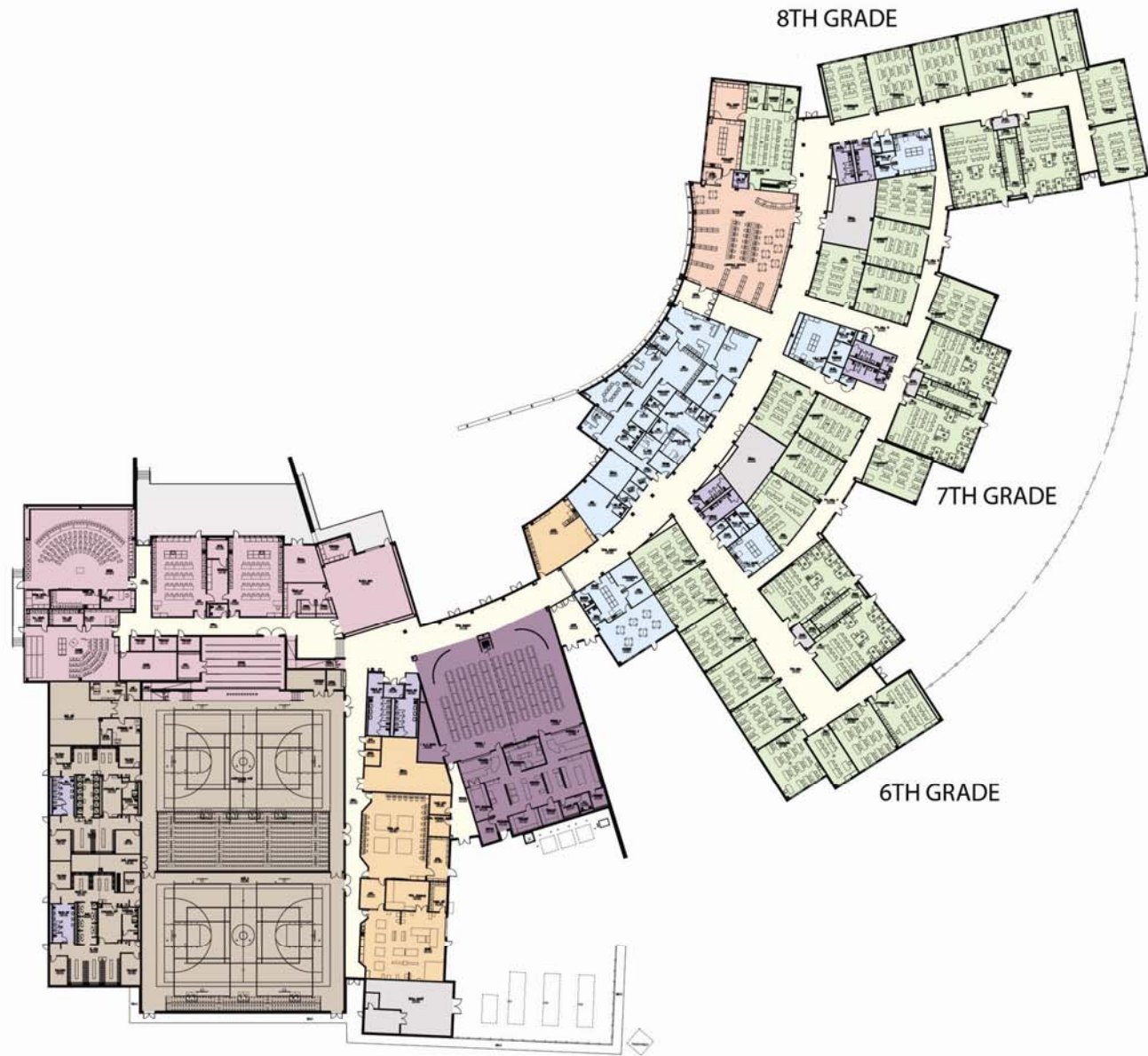
- Wood Stain:**

Change color of wood trim on wainscot to coordinate with tile floor

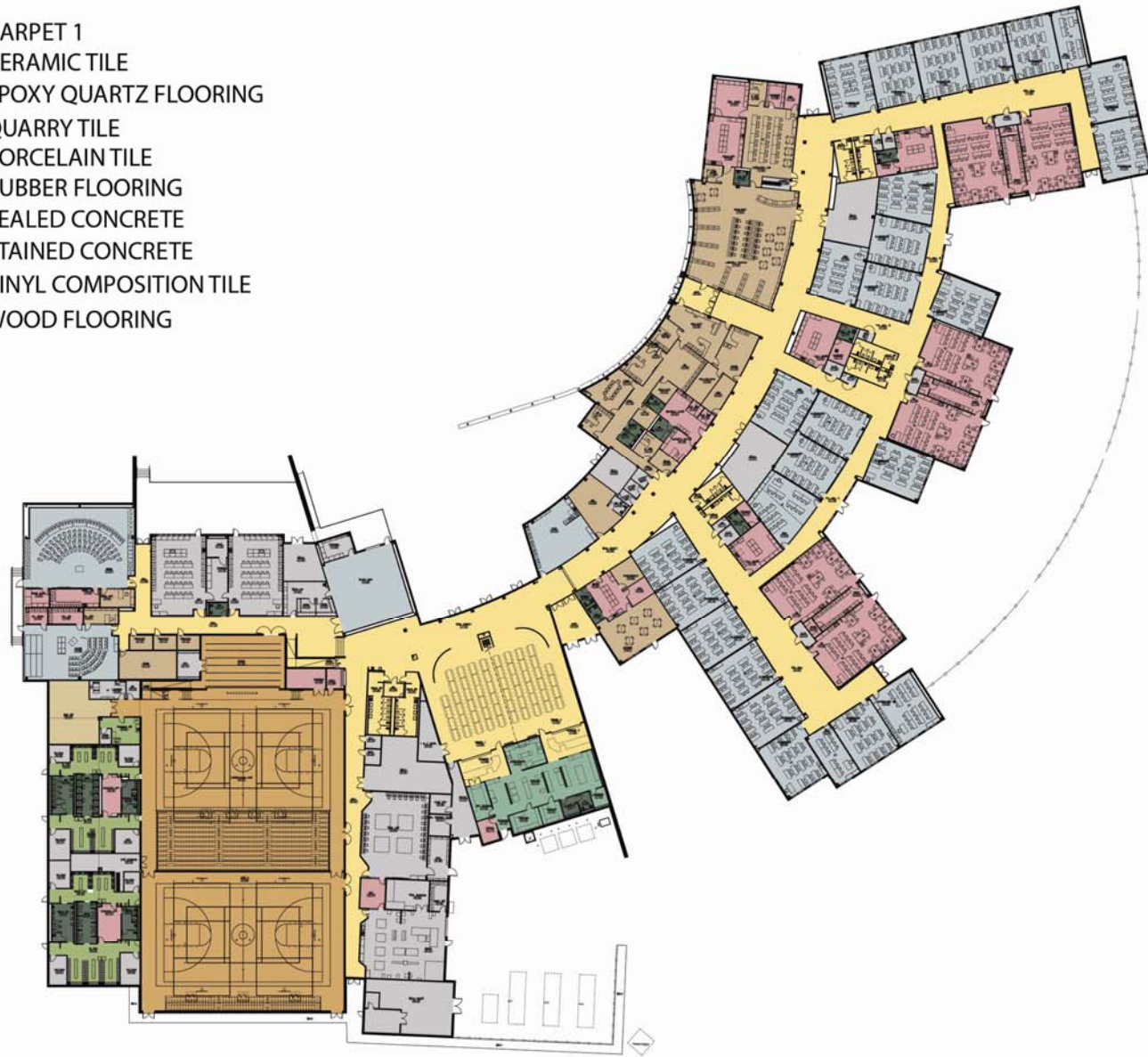




- ATHLETICS
- CLASSROOMS
- DINING
- LIBRARY
- ADMINISTRATION
- FINE ARTS
- CAFE
- RESTROOM
- UTILITIES
- CIRCULATION



(Admin, Library, Auditorium, Fine Arts)	CARPET 1
(Restroom, Showers)	CERAMIC TILE
(Locker Area)	EPOXY QUARTZ FLOORING
(Kitchen)	QUARRY TILE
(Main Circulation, Dining)	PORCELAIN TILE
(Weight Room)	RUBBER FLOORING
(Mech., Jan., Storage, Etc.)	SEALED CONCRETE
(Classrooms, Fine Arts)	STAINED CONCRETE
(Science, Misc Classrooms)	VINYL COMPOSITION TILE
(Gymnasium)	WOOD FLOORING



DETAILED BLOW UP OF THIS AREA SHOWN BELOW



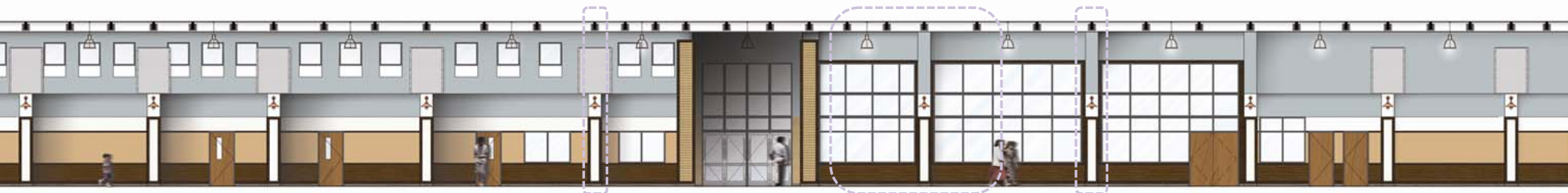
FINE ARTS

DINING  
ENTRY

HALLWAY IN FRONT OF ADMIN



DETAILED BLOW UP OF THIS AREA SHOWN BELOW



HALLWAY IN FRONT OF ADMIN

FRONT  
ENTRY

LIBRARY

CLASSROOM

DETAILED BLOW UP OF THIS AREA SHOWN BELOW



8<sup>th</sup> GRADE CLASSROOM POD

7<sup>th</sup> GRADE CLASSROOM POD



DETAILED BLOW UP OF THIS AREA SHOWN BELOW



6<sup>th</sup> GRADE CLASSROOM POD

DINING  
ENTRY

DINING

DINING  
RESTROOM



